

C O N C R E T E B A T C H P L A N T S

APACHE SQP SPECIFICATIONS

General Specifications:

Capacity of 200 yds per hour.
All the air piping is factory installed.
This plant is a complete plant on a single axle, and moves by one tandem axle truck-tractor.
All the batching controls are electric-over-air manual.

Aggregate Section:

Three hinged compartment overhead storage, heaped cap. Of 47.6 cu. yds or 64.3 tons
12 cu. yd. aggregate weigh batcher

Transportation Section:

Single axle 8.25 x 22.5 dual wheels & air brakes
30" x 40' -0" Aggregate transfer conveyor:
15 HP drive with reducer

Cement Section:

Capacity 1500 cub. Ft. (55.5 tons) 385 Max. BBL

Plant Dimensions

Overall Length, operating position - 48' 0"
Travel length - 68' 2"
Travel height - 14' 4"
Travel width - 11' 0"
Weight (approximate) - 43000 lbs
Overhead bin charging height - 17' 2"
Discharge height - 12' 6"



Liddell Industries, Inc.

4306 U.S. 377
Brownwood, TX 76801

L I D D E L L
I N D U S T R I E S
C O N C R E T E B A T C H P L A N T S

APACHE SQP



937-747-4300

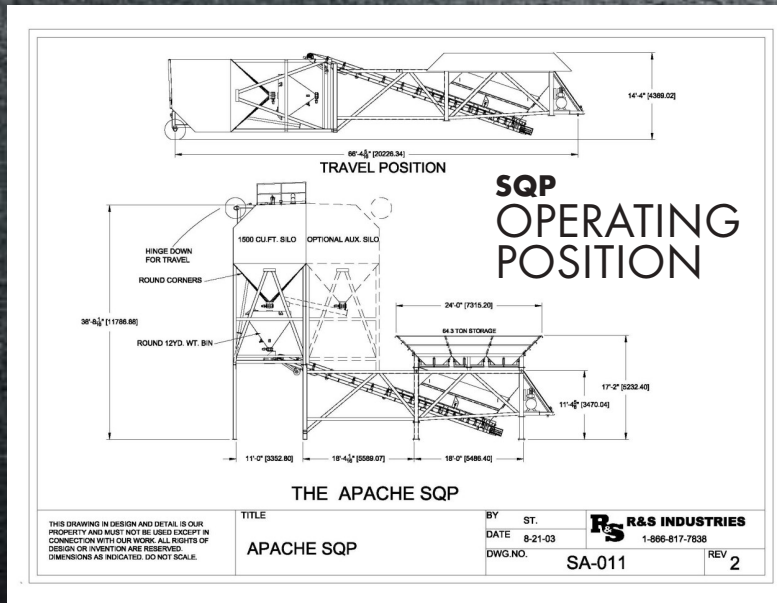
www.SterlingConcreteEquipment.com

LIDDELL

APACHE SQP CONCRETE BATCH PLANTS



SQP TRAVEL POSITION

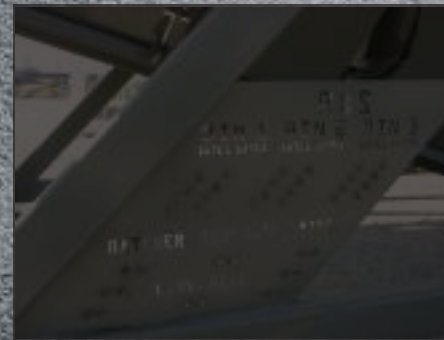


STERLING CONCRETE EQUIPMENT



CENTRALIZED AIR PANEL

All solenoid valves are mounted in a NEMA enclosure with all the air inlet lines piped into the box and the exhaust air is piped out of the box. Each valve is equipped with a "quick" shut off valve to enable customer to isolate the solenoids for fast and safe change out.



CENTRALIZED LUBRICATION SYSTEM (OPTIONAL)

All lubrication points on aggregate section can be piped to one location for easy one stop lubrication of all agg. gates and the tail of conveyor. All points are easily identified and located.

